

# Parking Near Schools

## NO STOPPING



You **CANNOT** stop in these areas **FOR ANY REASON**.  
You **CANNOT** stop to drop off or pick up children/passengers.

## YELLOW LINES (continuous)



You **CANNOT** stop on a yellow line **FOR ANY REASON**.  
You **CANNOT** stop to drop off or collect children/passengers.

## BROKEN YELLOW LINES



A broken yellow line indicates a parking zone.  
Please look for a sign to indicate parking restrictions.

## 'Kiss and Drop' NO PARKING



A No Parking Zone is for the **IMMEDIATE PICK UP** and **DROP OFF** of children/passengers. Within this zone you are only allowed to park for a maximum of 2 minutes and the driver must always remain within 3 metres of the vehicle. This means you cannot leave your vehicle unattended.

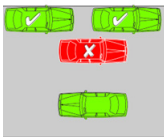
If your child is not present, you will need to move on to ensure the zone works effectively for all users. Make sure to check signs for times that the zone is active.

## BUS ZONE



You must **NOT** stop or **PARK** in a bus zone.  
You **CANNOT** drop off or collect children/passengers even if there is no bus in sight.  
Most bus zones are 30 metres long. 20 metres before the bus stop and 10 metres after.

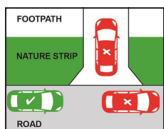
## DOUBLE PARKING



You must **NOT** stop on the road adjacent to another vehicle at any time.

You **CANNOT** drop off or pick up children/passengers.

## FOOTPATH AND DRIVEWAYS



You **CANNOT** stop or park and leave your vehicle on a **FOOTPATH** or **NATURE STRIP** or across a **DRIVEWAY**.

## BIKE LANES



You **CANNOT** stop in these lanes **FOR ANY REASON**. You may not stop to drop off or collect children/passengers.

Please note that almost all major roads will have Bike lanes and or Clear way zones.

If no times are displayed on the signs it, means the zone is effective 24 hours 7 days a week.

## ROAD SAFETY TIPS

- Make the effort to use the designated crossing, even if it means walking a little further
- Organise to meet your child at an agreed safe place, with preference to collect them from the same side of the road as the school where possible
- Park and meet your child, don't call them to cross the road by themselves
- Avoid U-turns and 3-Point Turns within school zones – this confuses other traffic and children.