



*Saint
Ignatius'
College*

Renewal for the Future

MASTER PLAN



Inspiring Minds, Igniting Hearts

Inspiring Minds, Igniting Hearts is the Saint Ignatius' College Strategic Plan for 2024-2028. In this plan, we are on an ambitious journey, integrating our Jesuit mission and Ignatian spirituality into modern contexts. One of the priorities within *Inspiring Minds, Igniting Hearts* is the development of a robust Master Plan, to ensure the sustainable use of resources while navigating the changing needs of the future.

Our Master Plan, *Renewal for the Future*, has a very deliberate focus on renewal across all three sites at Norwood and Athelstone. Inspired by St Ignatius' call to live with one foot raised, we are ready to respond to strong enrolment growth and emerging needs, and move purposefully into new areas. This plan envisions

a physical environment that is more adaptable, forward-looking, and capable of supporting our exceptional learning culture into the future.

We are delighted to have already embarked on the construction of the 'Magis Centre', the hero project of our new Master Plan. In building this new state-of-the-art sports and multi-purpose facility, we are providing students new opportunities through strengthened co-curricular offerings, high performance programs, and forward-thinking contemporary learning experiences.

Our new Nature Play space at the Junior School is now complete and already sparking the imaginations of our little Ignatians. This thoughtfully designed area invites curiosity,



discovery, and joyful exploration for students across both the Early Years and Junior School.

The next stage of the Master Plan commenced in late 2025 and will continue into 2026. This will see the renewal and modernisation of classrooms and facilities, the delivery of new signage and landscaping, and the completion of projects that promote our sense of shared identity across Norwood and Athelstone.

Further into the Master Plan, the College has bold plans. We have an exciting vision for a brand-new facility that connects our Ignatius Early Years and our Junior School, through a new state-of-the-art learning space. This will encompass modern classrooms (for the Early Years and Junior Primary), fresh play spaces,

and a scenic rooftop sustainability space that overlooks the Adelaide skyline.

Through education, we inspire our students to go out and make the world brighter. We believe our Master Plan, underpinned by our Strategic Plan, best supports our Ignatian students to live out this vision, to go and set the world alight.

Thank you to all members of the Ignatian community for your ongoing support of the College.

From Dreaming to Design

Insights from the Architects, Swanbury Penglase

The Master Plan reflects a process of exploration and vision - informed through observation, reflection, and imagination, and guided by the voices and aspirations of the College community.

Consultation with College leaders, staff, and students was guided by ideas generated during the 'Dreaming Nights' workshops, which engaged the broader College community. These contributions provided the foundation for defining strategic priorities and objectives, as well as some big-picture thinking.

The following guiding principles reflect the aspirations, core values, and shared vision of the College community:

- **Learning** - Provide a contemporary learning environment that encourages curiosity, growth and engagement.
- **Belonging** - Create an environment that fosters a strong sense of belonging, faith and community, where each person is welcomed, respected and supported by holistic wellbeing practices, guided by Jesuit traditions.
- **Identity** - Enhance the College's visibility and presence through street activation, aesthetic enhancements and effective branding strategies.
- **Connection** - Enhance campus connectivity to provide equitable access, prioritise pedestrian flow and activation, preserve and enhance the natural surroundings, and improve connections with the natural environment.
- **Environment** - Demonstrate responsible stewardship by prioritising environmental, social and economic sustainability and a commitment to caring for country.



MAGIS

the ongoing search for more -
more depth, more meaning, more
purpose - in discovering oneself
and one's greatest potential to be
of service to the world.



The Magis Centre

The Inspiration Behind the Name

Magis is a phrase that captures the spirit of St Ignatius Loyola and our College. As a community, we strive for excellence - not only for ourselves, but for the greater glory of God.



The Magis Centre

Senior School

In progress

Coming in 2026 is the hero project of our Master Plan. With meticulous planning, we have envisioned a facility that encompasses a range of superior spaces including:

- double courts with mobile retractable tiered seating
- a high-performance and strength and conditioning space
- a unique functional strength and development zone that incorporates elements of parkour, bouldering and other dynamic activities
- a multifunction space with adjoining viewing deck for special events
- provisions for dance (sprung floor, mirrored walls)



- large scale spectator seating facing all ovals
- mezzanine spectator seating overlooking courts
- classrooms and meeting rooms
- dugout style changerooms
- a kiosk



Beyond being a centre for sporting excellence, the Magis Centre will be a central place that unites us as a community. For the first time we will have a venue with capacity to fit our entire staff and student body from all three campuses – a special place for us to come together as one.



Refurbishments and Renovations

IEY, Junior School, Senior School

In progress

As part of our ongoing commitment to academic excellence, student wellbeing, and stewardship, we are embarking on a series of transformative upgrades across our campuses. These enhancements are not just about improving tired facilities. They are about instilling a sense of pride and ownership in our students, and creating environments that reflect the high standards and shared identity of our College community.

This stage will see the renewal and modernisation of toilet facilities and the refurbishment of classrooms and shared learning spaces. Additional fencing, landscaping, and contemporary signage that reflects our College's culture and vision, will also be delivered.

Importantly, these projects are designed to strengthen the sense of connection across our three campuses, reinforcing our identity and values in every space students experience Ignatian education.





BUS STATION IN ANTIBES, FRANCE

Traffic Control, new Kiss & Ride

Senior School

To come

With the opening of our new Magis Centre and the expansive grounds of our Athelstone site, we have a unique opportunity to reimagine how students, families, and visitors move through our Senior School campus. This strategic review of traffic flow is focused not only on improving convenience but also on enhancing student safety and accessibility across the campus. Planned improvements include new access points, designated bus zones, and a redesigned drop-off and pick-up area to reduce congestion and improve flow.

The introduction of a clearly marked pedestrian crossing will be of high benefit, ensuring a safer and smoother passage for students and visitors navigating the campus. Thoughtfully designed pedestrian pathways and circulation routes will further support safe, intuitive movement across the site.

Junior School: Queen Street, Norwood, remains a busy thoroughfare, particularly during school drop-off and pick-up times. Throughout this master planning period, the College has continued to make significant investments to improve traffic flow and safety in the Norwood area. This includes the development of a new off-site staff car park, removing approximately 40 cars from the surrounding streets. In addition, we have expanded our Campus Link Bus Service and introduced the Northern Connector Bus Service - together reducing an estimated 100 additional cars from Queen Street during peak times. We continue to explore opportunities to expand our bus services, guided by parent feedback. The College remains committed to ensuring that morning and afternoon travel to and from school is as safe, efficient, and well-managed as possible.

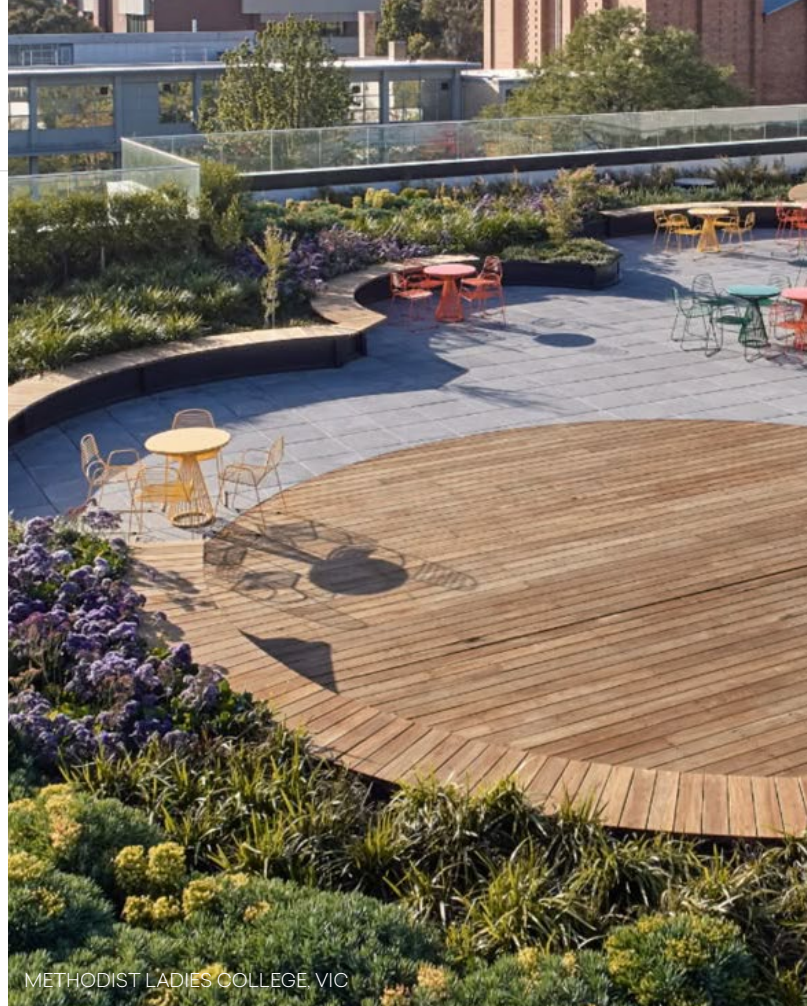
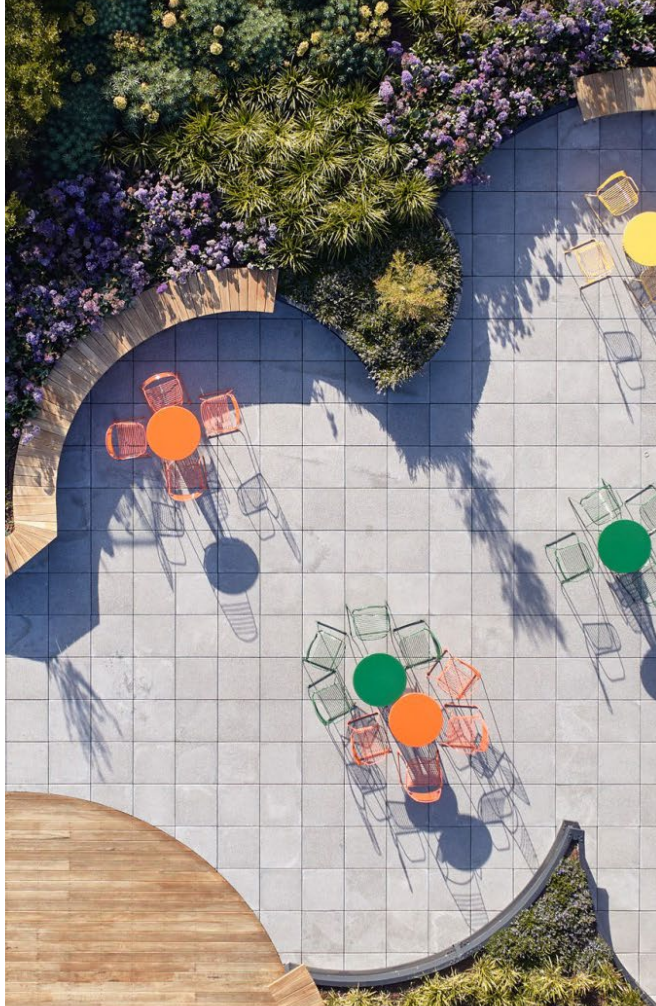
Junior Primary Playground

Junior School

To come

During the course of our master planning in 2025, we completed the Nature Play Space at the Junior School. Looking ahead, there are plans for a new Junior Primary Playground that brings a fresh air of excitement to our little Ignatians. This project will involve the demolition of the current Junior Primary playground to make way for a new and more expansive play space. Drawing inspiration from nature play, the vision for this space incorporates design elements which inspire wonder, joy and imagination while also instilling a sense of welcome and belonging.





Skyline Building: Campus Integration on the Horizon

IEY, Junior School

To come

Blue sky dreaming will become reality with a state-of-the-art integrated learning facility that is set to transform the way our youngest learners connect, grow, and thrive.

This architecturally striking space will bridge our Ignatius Early Years and Junior School campuses, creating a unified environment that builds community. Featuring next-generation classrooms designed for Early Years and Junior Primary students, the facility will also include dynamic play spaces that spark imagination and movement.

An inspiring space for elevated learning, this elegant and contemporary facility will make the most of our valuable positioning in the heart of Norwood, just minutes from the city centre. At its heart is a rooftop sustainability space, a living classroom in the sky. Students will engage with nature, stewardship, and science, all while overlooking the city they will one day shape.

Boundless Possibilities

Senior School

Into the future

Ignatians don't shy away from bold dreams. Awakened to possibility and guided by our strong sense of identity, we imagine a Senior School campus with exceptional facilities that offer unparalleled opportunities for our students. Today, we dream openly of an Olympic-sized swimming pool, a vibrant café, a dynamic recreational hub, and a new academic facility. And we remain ready to follow where imagination and purpose lead us next.



XAVIER COLLEGE, VIC



Senior School Long Term Priorities





TOWERS @ 2ND - SAN JOSE, CALIFORNIA

A Campus of Distinction

IEY & Junior School

Into the future

Proud, courageous and inspired, we envision our Ignatius Early Years and Junior School campuses twenty years from now as a radiant jewel in the heart of Norwood. We will continue to build, refine, elevate, and enrich every space with purpose, innovation and a commitment to excellence. Here, in this place of wonder, a lifelong love of learning begins.

IEY and Junior School Long Term Priorities

- Refurbishment of Existing Building
- New Building
- Greening and Landscape
- Existing Building
- Existing Undercroft
- Campus Heart
- Roof/Canopy Structure
- Demolition
- External Hardscape Upgrades
- Carpark

- 01** New 2-3 storey Cairns Street development for expansion of IEY 3-year and 4-year old program and new Reception Hub
- 02** Junior Primary roof terrace, play space, outdoor sustainable classroom and kitchen garden program
- 03** Inter-campus IEY and JS connection and access
- 04** First floor connection and access to Mary Glowrey Centre
- 05** IEY and Junior Primary Courtyard
- 06** IEY entrance activation and mural
- 07** Adaptive reuse of existing Pies Cottage incorporating a waiting and shelter facility
- 08** Civil and car park improvements
- 09** Refurbishment of GF breakout learning areas
- 10** Refurbishment of L1 breakout learning areas
- 11** Outdoor learning areas
- 12** Refurbishment of LG junior primary toilets to accommodate staff end-of-trip and store facilities
- 13** Refurbishment of student toilets
- 14** New student toilets
- 15** Upgrade to entrance laneway, sheltered link and gathered area
- 16** New shade structure over existing handball courts
- 17** Refurbishment of existing undercroft to create new student courtyard
- 18** New outdoor learning area
- 19** Covered viewing deck and Gym entrance canopy
- 20** New Upper Primary play space
- 21** New sports courts shade structure
- 22** Renewal of practice cricket nets
- 23** Replacement of Junior Primary playground
- 24** Nature Play Space
- 25** Refurbishment of staff room
- 26** New staff offices
- 27** Internal refurbishment of the existing 'Refuge' cottage to support the relocation of administrative functions
- 28** Refurbishment of staff toilets
- 29** Refurbishment and organisation of staff carpark facilities on water tower land holding



Spiritual, Cultural, & Educational



A Home Away From Home

Sevenhill Cellars,
Clare Valley

Into the future

As Saint Ignatius' College marks its 75th anniversary in 2026 and Sevenhill observes 175 years since its founding, we recognise a profound shared history grounded in Jesuit mission, hospitality, and formation. In this milestone moment, we acknowledge the unique opportunity to strengthen our partnership with Sevenhill.

We plan to explore new and innovative ways to deepen student and staff formation experiences, expand access to this sacred and historic site, and ensure that generations to come continue to encounter the spiritual, cultural, and educational gifts that Sevenhill offers our community.

From strong foundations to a brilliant future

In 2026, we proudly celebrate 75 Years of Saint Ignatius' College, while also joining our wider Jesuit community in celebrating 175 years of Sevenhill Cellars - two remarkable milestones born by the bold vision of the Jesuits many years ago.

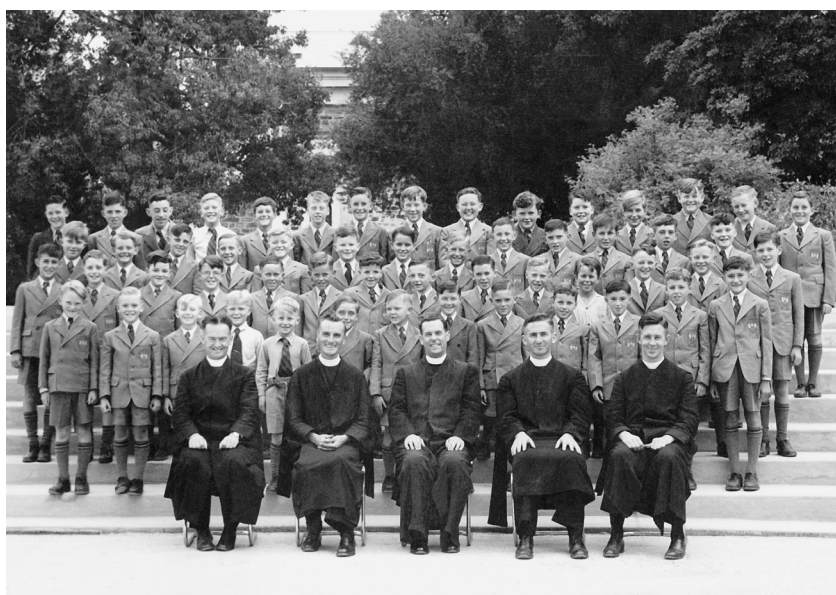
From the pioneering Jesuits who planted the first vines at Sevenhill in 1851 to those who opened the doors of Saint Ignatius' College in 1951, this is a shared story of courage, faith, and commitment to forming people of good character, intellectual curiosity, and service to others.

Together, these anniversaries honour a legacy that has shaped generations and continues to shape the future. As the College advances its ambitious 2025 Master Plan, we build on the same spirit of imagination that founded a spiritual home in the Clare Valley and a school grounded in excellence: a vision bold enough to ignite our Ignatian community with passion for decades to come.

75 Years
AD MAIOREM
DEI GLORIAM



COLLEGE AND CHURCH AT SEVENHILL IN EARLY 1900s



STUDENTS AND STAFF AT THE NORWOOD CAMPUS IN FEBRUARY 1951



Saint
Ignatius'
College

Ready to follow where
imagination and
purpose lead.



Ignatius Early Years

58 QUEEN STREET
NORWOOD SA 5067

(08) 8130 7180

Junior School

62 QUEEN STREET
NORWOOD SA 5067

(08) 8130 7100

Senior School

2 MANRESA COURT
ATHELSTONE SA 5076

(08) 8334 9300

ignatius.sa.edu.au